

Hard Rock Lithium Exploration in Canada



One of the most exciting hard rock lithium exploration portfolios.



Cali Lithium Project, NT
Up to 1,200m x 60m wide spodumene pegmatite

Quebec Greenfields
2,300 sq. km land position in the James Bay region

Yellowknife Lithium Project, NT

13 significant spodumene pegmatites with excellent access to infrastructure.

- Li-FT owns the mineral rights to the vast majority of the known spodumene-bearing pegmatites in the Yellowknife Pegmatite Province.
- Li-FT completed archaeological surveys with the help of Indigenous elders in 2023.
- The project is in the exploration stage.
 - Drilling began in June 2023.
 - ~50,000 m completed across 8 pegmatite dykes at the Big-Nite (3), Hidden (4), and Echo (1) areas.
 - Some areas have been tested for processing potential.
 - Not all areas have the same potential for development.

YELLOWKNIFE LITHIUM PROJECT OVERVIEW

Exploration Program Overview

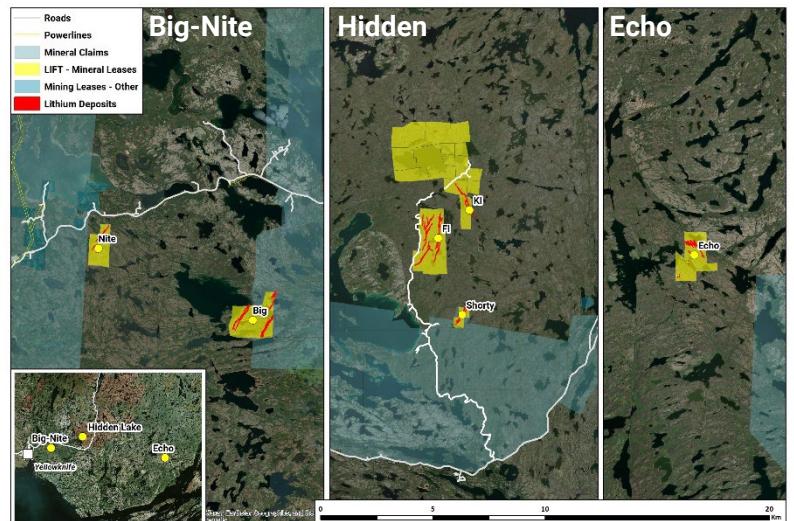
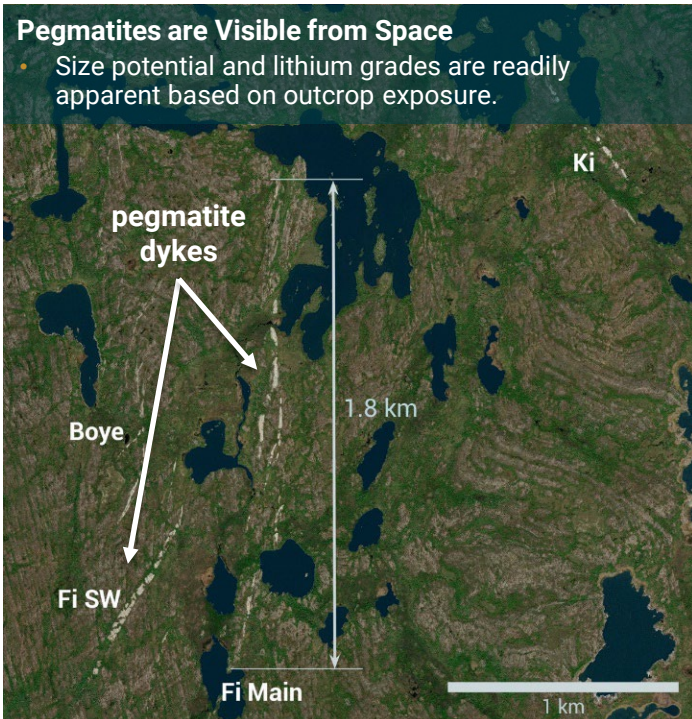
Type A Land Use Permit - MV2022C0022

Type B Water Licences - MV2022L8-0008, MV2022L8-0009

- Two Exploration Camps
 - Hidden Lake, Tanco Lake (Echo)
- Winter Roads and Trails
- Aerial Surveys, Mapping, Drilling, Channel Sampling
- Baseline Environmental and Socioeconomic Studies

Pegmatites are Visible from Space

- Size potential and lithium grades are readily apparent based on outcrop exposure.



Hard Rock Lithium Exploration in Canada

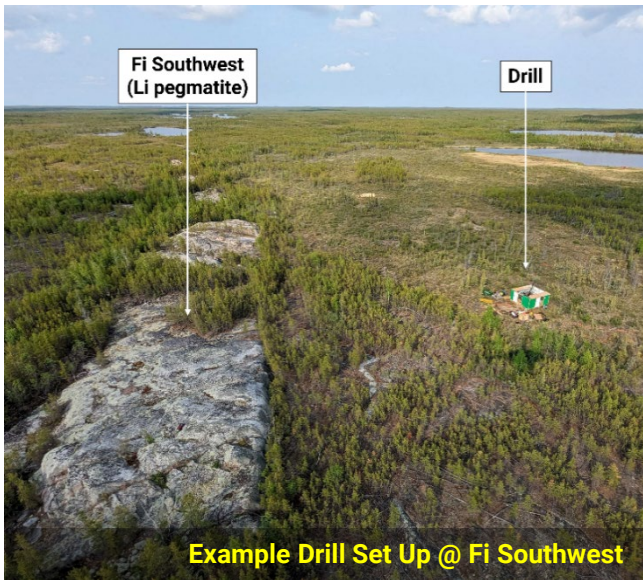


ESG HIGHLIGHTS

- ✓ Executive oversight – Chief Sustainability Officer
- ✓ Established, effective engagement process
- ✓ Local and Indigenous employment and procurement prioritised



GEOLOGICAL, EXPLORATION, AND MINING OVERVIEW



Lithium is found in spodumene. Spodumene is found in pegmatite dykes. Pegmatite dykes can be seen on surface around Yellowknife.



Spodumene and pegmatite are non-toxic.

Spodumene is separated from pegmatite using Dense Media Separation (DMS) – like Diamond Mining.

Spodumene concentrate – like gravel or sand – is the final product that would be created in the Yellowknife area. It would be shipped elsewhere for processing.



Archaeology crews survey the Yellowknife Lithium Project in June 2023.

