



## LIFT intersects 35 m at 1.34% Li<sub>2</sub>O at its BIG East pegmatite, Yellowknife Lithium Project, NWT

April 30, 2024 – Vancouver, B.C., Li-FT Power Ltd. (“LIFT” or the “Company”) (TSXV: LIFT) (OTCQX: LIFFF) (Frankfurt: WS0) is pleased to report assays from 16 drill holes completed at the BIG East, Echo, Fi Main, & BIG North pegmatites within the Yellowknife Lithium Project (“YLP”) located outside the city of Yellowknife, Northwest Territories (Figure 1). Drilling intersected significant intervals of spodumene mineralization, with the following highlights:

### Highlights:

- YLP-0271: **35 m at 1.34% Li<sub>2</sub>O, (BIG East)**
- YLP-0251: **28 m at 1.06% Li<sub>2</sub>O, (BIG East)**  
including: 10 m at 1.69% Li<sub>2</sub>O  
and including: 3 m at 1.59% Li<sub>2</sub>O
- YLP-0258: **16 m at 1.48% Li<sub>2</sub>O, (BIG East)**
- YLP-0246: **14 m at 1.02% Li<sub>2</sub>O, (Echo)**
- YLP-0262: **11 m at 1.22% Li<sub>2</sub>O, (BIG East)**
- YLP-0240: **9 m at 1.04% Li<sub>2</sub>O, (Echo)**  
including: 4 m at 1.98% Li<sub>2</sub>O
- YLP-0254: **6 m at 1.23% Li<sub>2</sub>O, (Echo)**

### Discussion of Results

This news release provides results for 16 drill holes (2,227 m) from LIFT’s 2024 winter drilling program. Four holes are reported from the BIG East pegmatite complex, eight from Echo, three from Fi Main, and one from BIG North. A table of composite calculations, general comments related to this discussion, and a table of collar headers are provided towards the end of this section.

Dave Smithson, SVP Geology of LIFT comments, “This week we saw the first holes back from the northeast end of the very impressive BIG-East pegmatite where YLP-0271 intercepted the best width, and highest grades drilled to date on the Big-E pegmatite, averaging 1.34% Li<sub>2</sub>O over 35 m. This hole marks the very most northeast limit of drilling and extends high grade mineralization under the lake from the southwest for a total of 750 m, to date. We are very excited to see what happens next as we move our drill rigs up onto the ice and continue testing along the dyke for more high-grade lithium zones hidden by the lake.”

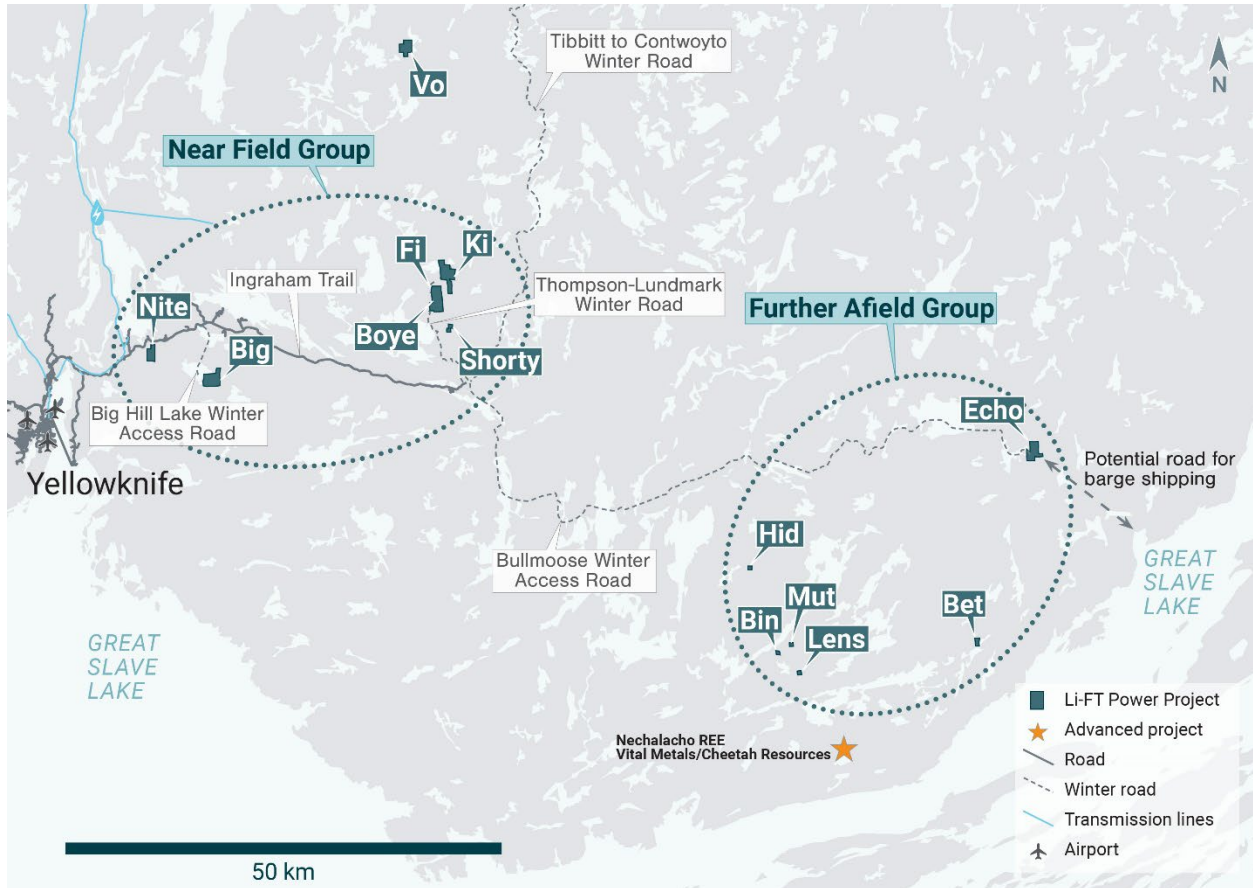


Figure 1 – Location of LIFT’s Yellowknife Lithium Project. Drilling has been thus far mainly focused on the Near Field Group of pegmatites which are located to the east of the city of Yellowknife along a government-maintained paved highway, and advancing to the Echo target, the first drilling in the Further Afield Group.

### ***BIG East Pegmatite***

The BIG East pegmatite complex comprises a north-northeast trending corridor of parallel-trending dykes that is exposed for at least 1.8 km of strike length, ranges from 10-100 m wide, and dips approximately 55°-75° degrees to the west. The four holes reported here were all drilled at the northern end of this pegmatite complex and are presented below from southern- to northern-most.

YLP-0271 and YLP0262 are the most northerly holes drilled on the BIG East main pegmatite complex to date, with YLP-0271 collared 50 m north-northeast of YLP-0258 and designed to test the BIG East corridor 75-100 m below the surface. YLP-0271 intersected a 38 m wide pegmatite dyke that returned a composite of 1.34% Li<sub>2</sub>O over 35 m (Table 1 & 2, Figures 2 & 3).

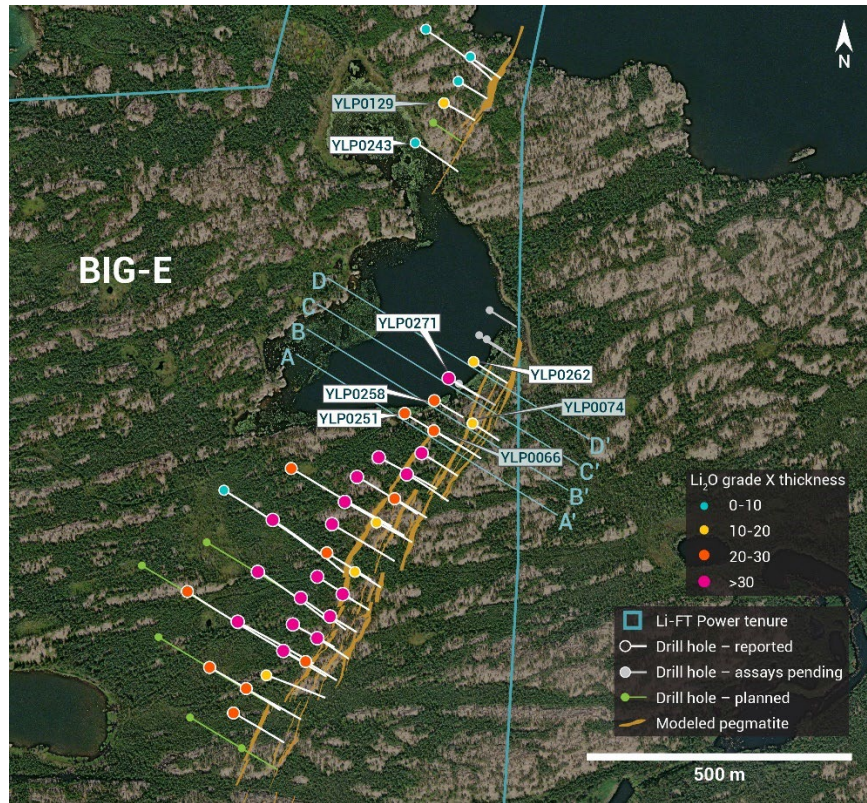


Figure 2 – Plan view showing the surface expression of the BIG East pegmatite with diamond drill holes reported in this press release.

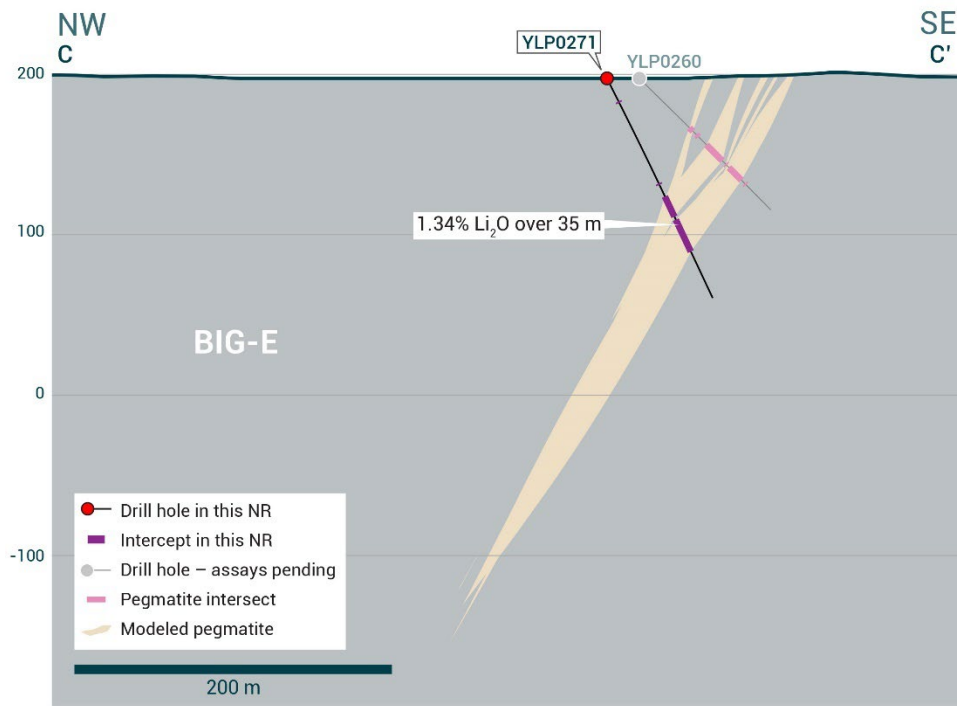


Figure 3 – Cross-section illustrating YLP-0271 with results as shown in the BIG East pegmatite dyke with a 35 m interval of 1.34%  $\text{Li}_2\text{O}$ .

YLP-0262 is the most northerly hole drilled on the main BIG East complex, collared 50 m north-northeast of YLP-0271, the hole was designed to intersect the corridor 50 m beneath the surface. Drilling intersected a 42 m wide corridor with 28 m of pegmatite in two dykes. The lower dyke is 11 m wide and returned a wall-to-wall composite of 1.22%  $\text{Li}_2\text{O}$  whereas the 17 m wide upper dyke returned negligible grade. Overall, results from these four holes show that the northern end of the BIG East complex is open at depth and along strike to the northeast (Table 1 & 2, Figures 2 & 4).

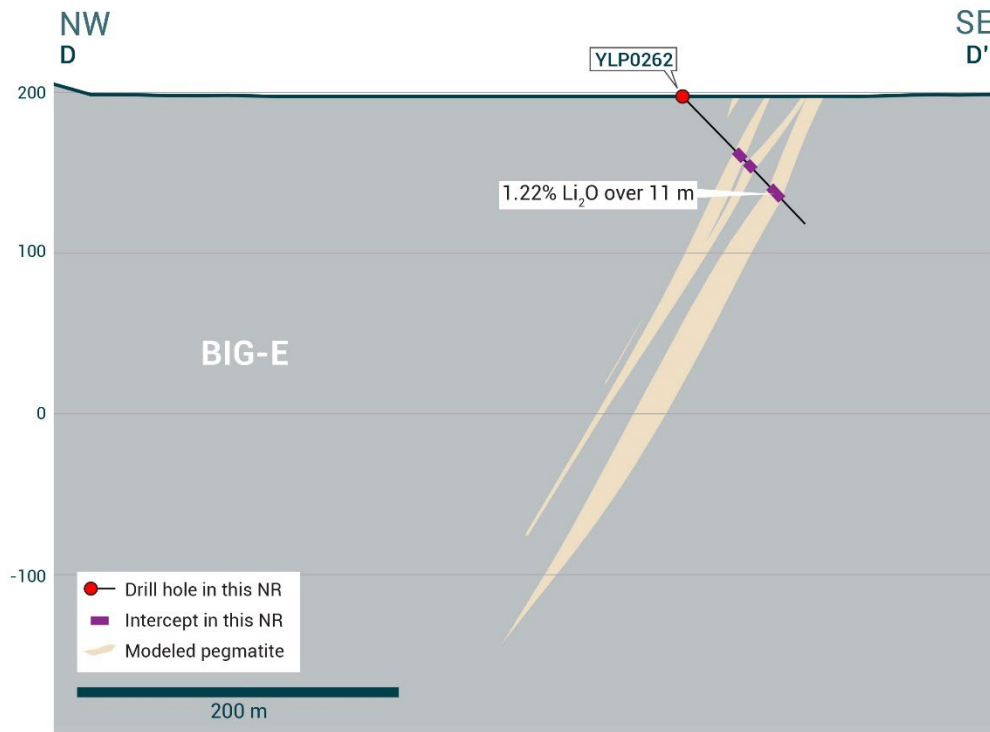


Figure 4 – Cross-section illustrating YLP-0262 with results as shown in the BIG East pegmatite dyke with a 11 m interval of 1.22%  $\text{Li}_2\text{O}$ .

YLP-0251 was drilled 150 m from the northern mapped extent of the BIG East complex to test between 75-100 m below the surface and 25-50 m downdip of previously released YLP-0066 (1.34%  $\text{Li}_2\text{O}$  over 20 m from two intervals 7 m apart). Drilling intersected a 32 m wide pegmatite dyke that returned an assay composite of 1.06%  $\text{Li}_2\text{O}$  over 28 m that includes 10 m of 1.69%  $\text{Li}_2\text{O}$  and 3 m of 1.59%  $\text{Li}_2\text{O}$  (Table 1 & 2, Figures 2 & 5).

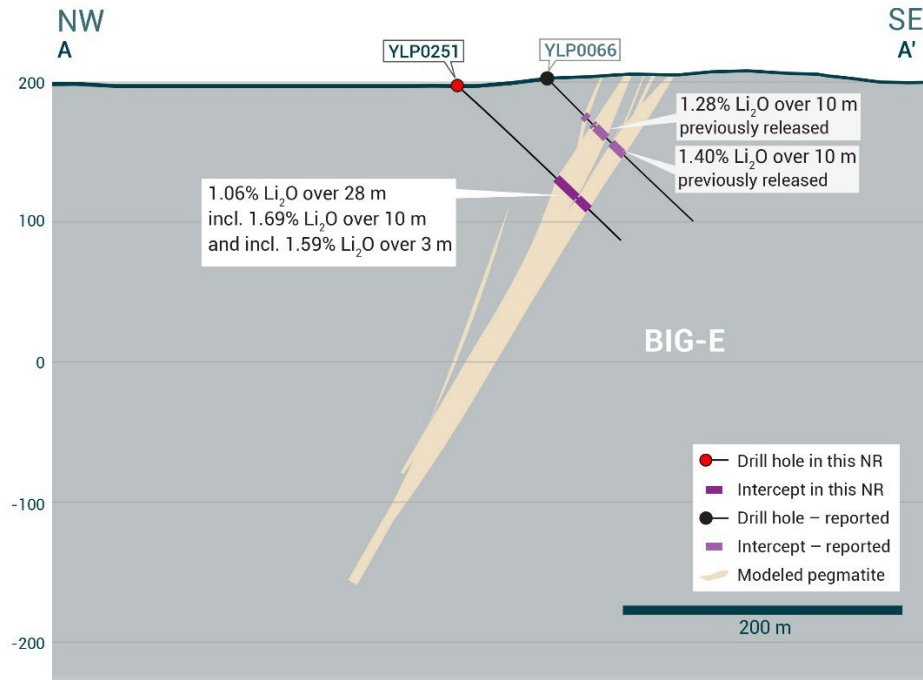


Figure 5 – Cross-section illustrating YLP-0251 with results as shown in the BIG East pegmatite dyke with a 28 m interval of 1.06%  $\text{Li}_2\text{O}$ .

YLP-0258 was collared 50 m north-northeast of YLP-0251 to test the BIG East complex approximately 75 m beneath the surface and 50 m downdip of previously released YLP-0074 (0.82%  $\text{Li}_2\text{O}$  over 22 m). Drilling intersected a 28 m wide pegmatite dyke that returned an assay composite of 1.48%  $\text{Li}_2\text{O}$  over 16 m (Table 1 & 2, Figures 2 & 6).

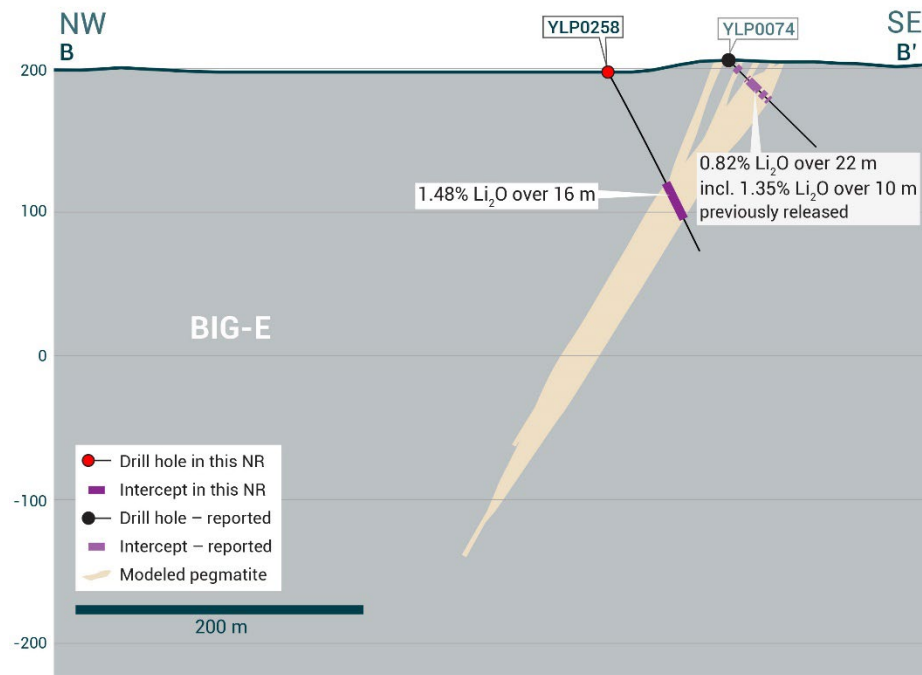


Figure 6 – Cross-section illustrating YLP-0258 with results as shown in the BIG East pegmatite dyke with a 16 m interval of 1.48%  $\text{Li}_2\text{O}$ .



## Echo Pegmatite System

The Echo pegmatite complex comprises a fanning splay of moderate to gently dipping dykes for 0.5 km to the northwest (“Echo splay”). At its east end, the Echo Splay is connected to a steeply dipping, northwest-trending, feeder dyke (“Echo feeder”). The dyke complex has a total strike length of over 1.0 km. The feeder dyke is 10-15 m wide whereas the gently dipping dykes in the splay are thicker, ranging from 10-25 m. Seven of the holes reported here were drilled on the feeder dyke and are described below from northern to southern most whereas one hole was drilled on the splay.

YLP-0246 was drilled on a section 50 m south-southeast of the section with YLP-0235/0240 to test the Echo feeder at 50 m below the surface. Drilling intersected 7 m and 20 m wide pegmatite dykes separated by 34 m of country rock, with the lower dyke returning a composite of 1.02%  $\text{Li}_2\text{O}$  over 14 m. The upper dyke returned negligible grade (Table 1 & 2, Figures 7 & 8).

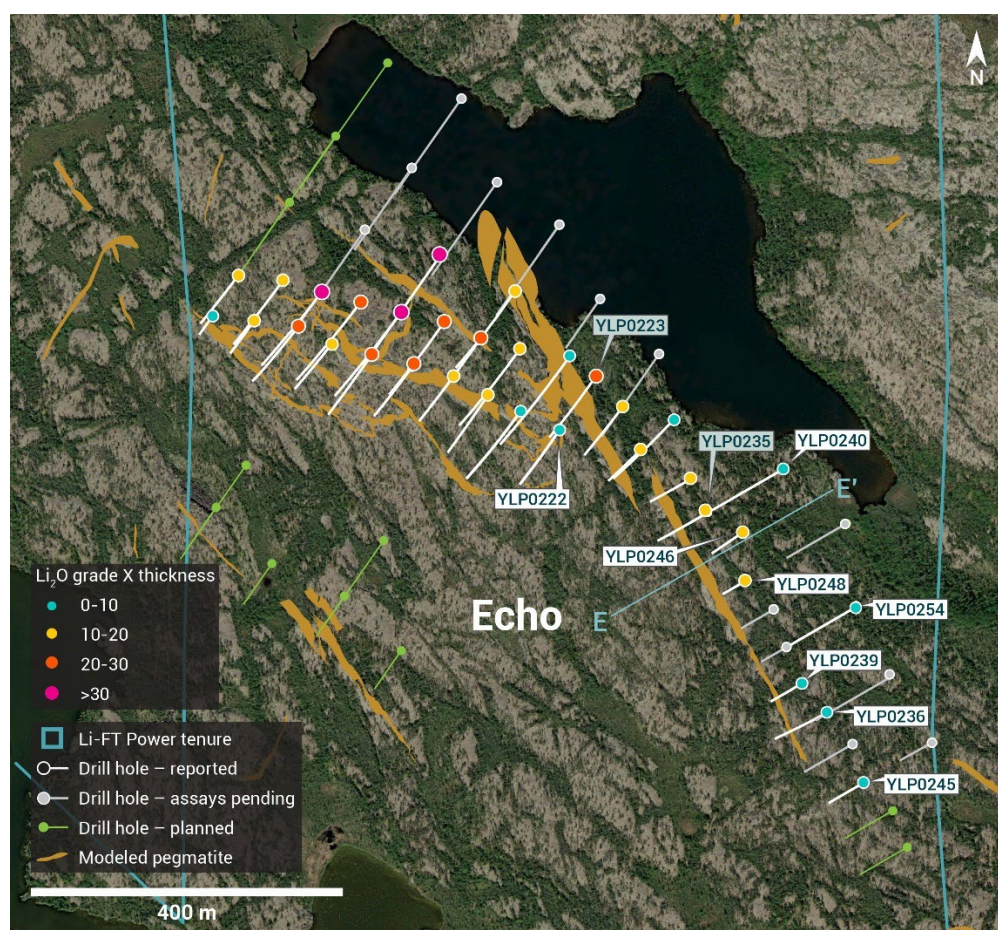


Figure 7 – Plan view showing the surface expression of the Echo pegmatite with diamond drill holes reported in this press release.

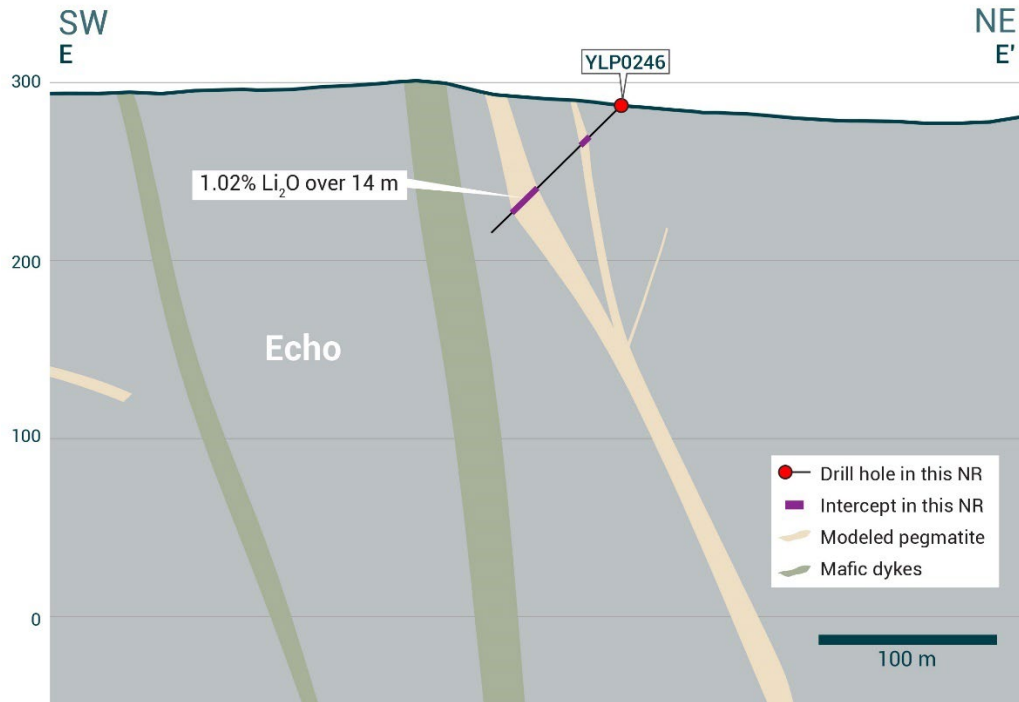


Figure 8 – Cross-section illustrating YLP-0246 with results as shown in the Echo pegmatite dyke with a 14 m interval of 1.02%  $\text{Li}_2\text{O}$ .

YLP-0240 tested the Echo feeder dyke on a section approximately 200 m south-southeast of where it merges with the splay, 100 m below the surface, and 75 m downdip of previously released YLP-0235 (1.25%  $\text{Li}_2\text{O}$  over 10 m). Drilling intersected a 9 m wide dyke with a wall-to-wall composite of 1.04%  $\text{Li}_2\text{O}$  that includes 4 m of 1.98%  $\text{Li}_2\text{O}$  (Table 1 & 2, Figure 7).

YLP-0254 was drilled on a section located 100 m south-southeast of YLP-0248 to test the Echo feeder at 125 m below the surface. Drilling intersected a 7 m wide dyke that returned a composite of 1.23%  $\text{Li}_2\text{O}$  over 6 m (Table 1 & 2, Figure 7).

YLP-0248 was collared 50 m south of YLP-0246 to test the Echo feeder at 25-50 m below the surface. Drilling intersected an 11 m wide pegmatite dyke that returned a wall-to-wall composite of 0.92%  $\text{Li}_2\text{O}$  that includes 5 m at 1.68%  $\text{Li}_2\text{O}$  (Table 1 & 2, Figure 7).

YLP-0236 was drilled on a section located 50 m south-southeast of YLP-0239 to test the Echo feeder at 25-50 m below the surface. Drilling intersected a 7 m wide dyke that returned a wall-to-wall composite of 0.79%  $\text{Li}_2\text{O}$  that includes 3 m of 1.42%  $\text{Li}_2\text{O}$  (Table 1 & 2, Figure 7).

YLP-0245 was collared on the southern-most section to test the Echo feeder dyke, located 100 m south-southeast of the section with hole YLP-0236 and designed to test at 25 m below the surface. Drilling intersected a 7 m wide dyke with a wall-to-wall composite of 0.62%  $\text{Li}_2\text{O}$  that includes 3 m of 1.30%  $\text{Li}_2\text{O}$  (Table 1 & 2, Figure 7).

YLP-0239 was drilled on a section located 50 m south-southeast of YLP-0254 to test the Echo feeder at 25 m below the surface. Drilling intersected a 7 m wide dyke that returned a composite of 0.51% Li<sub>2</sub>O over 1 m (Table 1 & 2, Figure 7).

YLP-0222 is the only hole reported here that was drilled into the Echo splay, with the hole collared in the area where the splay merges with the feeder and stepped forward approximately 80 m from previously released YLP-0223 (1.45% Li<sub>2</sub>O over 15 m). Drilling intersected two pegmatite dykes that are each just 2 m wide and returned negligible grades (Table 1 & 2, Figure 7).

### ***Fi Main Pegmatite***

The Fi Main pegmatite complex crops out over at least 1.5 km of strike length within a north-south striking corridor that dips between 70°-85° to the west. The central 800-900 m of the complex can be split into a northern part where most pegmatite occurs in a single 25-30 m thick dyke and a southern part where this dyke splits into upper and lower pegmatites that then remerge 450 m further south. The width of the Fi Main corridor ranges from 25-75 m where it is dominated by a single dyke and between 75-150 m where it is split into two.

YLP-0247 was drilled on the southern part of the Fi Main complex where it is split into an upper and lower zone. This hole was designed to test the upper zone at 50 m below the surface and the lower zone at around 125 m, as well as 25-50 m downdip of previously released YLP-0018 (0.81% Li<sub>2</sub>O over 19 m from two dykes, 59 m apart) as well as 200-250 m up-dip of YLP-0137 and YLP-0019 (both no significant results). New drilling intersected a 29 m wide upper zone that returned a wall-to-wall composite of 0.52% Li<sub>2</sub>O as well as a 19 m wide lower zone that returned a composite of 0.50% Li<sub>2</sub>O over 11 m. Both zones include higher-grade subintervals of 1.0-1.1% Li<sub>2</sub>O over 5-10 m (Table 1 & 2, Figures 9 & 10).



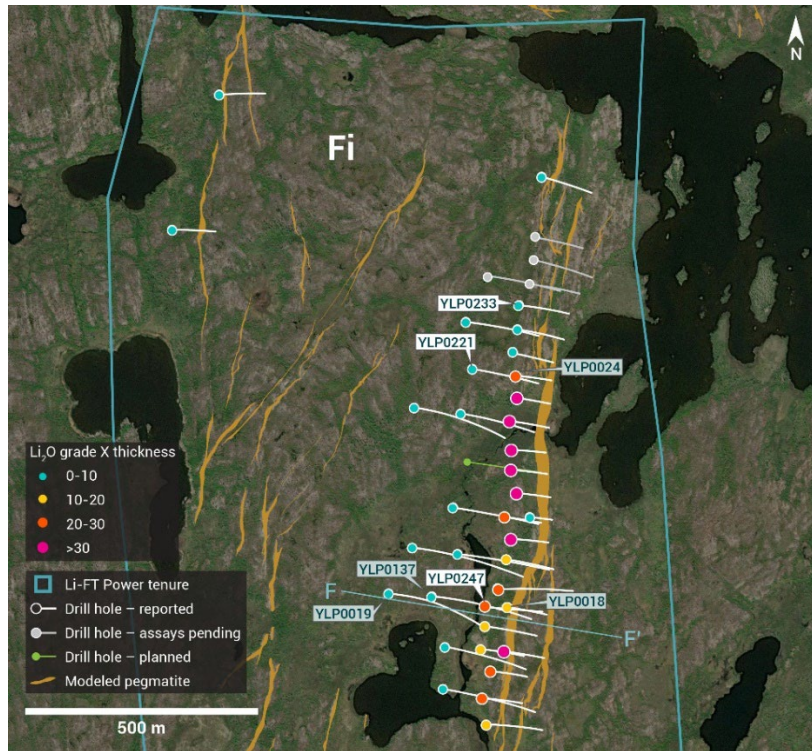


Figure 9 – Plan view showing the surface expression of the Fi Main pegmatite with diamond drill holes reported in this press release.

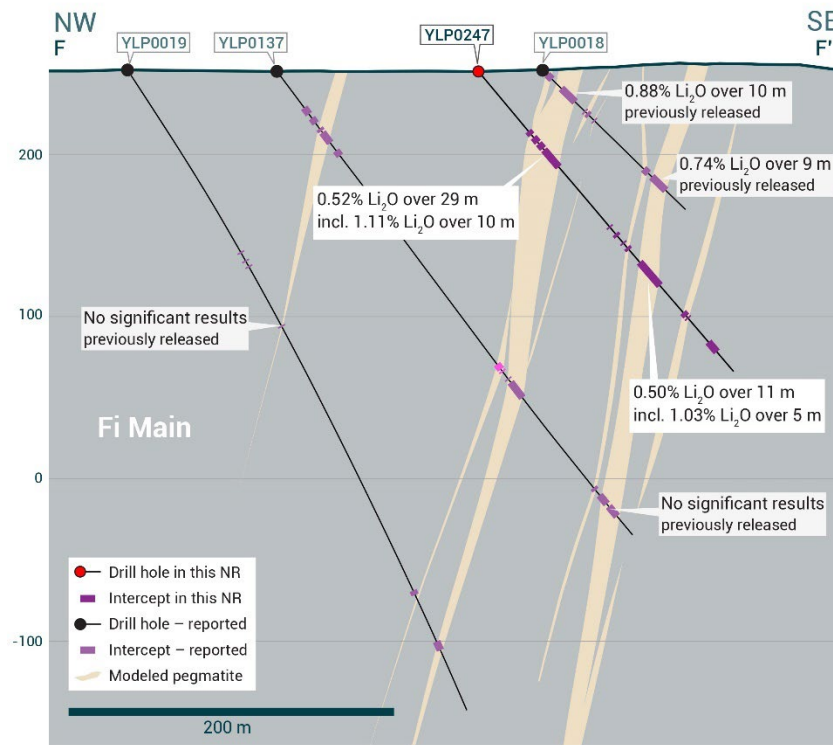


Figure 10 – Cross-section illustrating YLP-0247 with results as shown in the Fi Main pegmatite dyke with a 29 m interval of 0.52%  $Li_2O$ .

YLP-0221 was drilled in the northern part of the Fi Main complex, near where it splits from a single dyke in the south into a splay towards the north. The hole was designed to test the Fi Main corridor at 100-150 m below the surface and 50-100 m downdip of previously released YLP-0024 (1.12% Li<sub>2</sub>O over 24 m). New drilling intersected a 105 m wide corridor with 40 m of pegmatite spread over five dykes that all returned average grades of <0.2% Li<sub>2</sub>O (Table 1 & 2, Figure 9).

YLP-0233 was drilled on a section located 150 m north of the section with YLP-0024/0221 to test the Fi Main corridor at 50-100 m below the surface. Drilling intersected a 124 m wide corridor with 44 m of pegmatite spread over eight dykes that all returned average grades of ≤0.1% Li<sub>2</sub>O (Table 1 & 2, Figure 9).

### ***BIG North Pegmatite***

The BIG North pegmatite occurs 0.5 km north of the BIG East complex and possibly forms an echelon array with it. The BIG North dyke has been mapped for 350 m along strike, trends north-northeast, and dips moderate to steeply to the west.

YLP-0243 was collared 100 m south-southwest and along strike of previously released YLP-0129 (0.95% Li<sub>2</sub>O over 18 m) to test the BIG North corridor at approximately 50 m below the surface. This 140 m long hole failed to intersect pegmatite and no samples were taken (Table 1 & 2, Figure 2).

**Table 1 – Assay highlights for drill holes reported in this press release**

Hole No.	From (m)	To (m)	Interval (m)	Li <sub>2</sub> O%	Dyke
YLP-0221	No significant results				Fi Main
YLP-0222	No significant results				Echo
YLP-0233	No significant results				Fi Main
YLP-0236	49	56	7	0.79	Echo
<i>inc</i>	52	55	3	1.42	
YLP-0239	44	45	1	0.51	Echo
YLP-0240	137	146	9	1.04	Echo
<i>inc</i>	139	143	4	1.98	
YLP-0243	No significant results				BIG North
YLP-0245	49	56	7	0.62	Echo
<i>inc</i>	51	54	3	1.30	
YLP-0246	66	80	14	1.02	Echo
YLP-0247	48	77	29	0.52	Fi Main
<i>inc</i>	64	74	10	1.11	
<i>and</i>	162	173	11	0.50	
<i>inc</i>	164	169	5	1.03	
YLP-0248	47	58	11	0.92	Echo
<i>inc</i>	50	55	5	1.68	
YLP-0251	99	127	28	1.06	BIG East

<i>inc</i>	99	109	10	1.69	
<i>and inc</i>	124	127	3	1.59	
YLP-0254	145	151	6	1.23	Echo
YLP-0258	88	104	16	1.48	BIG East
YLP-0262	78	89	11	1.22	BIG East
YLP-0271	84	119	35	1.34	BIG East

### Drilling Progress Update

Currently, LIFT has reported results from 245 diamond drill holes (42,434 m). The Company concluded its winter drill program at the Yellowknife Lithium Project with a combined total of 286 diamond drill holes (49,548 m) completed between the summer and winter programs.

### General Statements

All 16 holes described in this news release were drilled broadly perpendicular to the dyke orientation so that the true thickness of reported intercepts will range somewhere between 65-100% of the drilled widths. A collar header table is provided below.

Mineralogical characterization for the YLP- pegmatites is in progress through hyperspectral core scanning and X-ray diffraction work. Visual core logging indicates that the predominant host mineral is spodumene.

**Table 2 - Drill collars table of reported drill holes in this press release**

Drill Hole	NAD83	Easting	Northing	Elevation (m)	Depth (m)	Azimuth (°)	Dip (°)	Dyke
YLP-0221	Zone 12N	371,701	6,942,039	256	231	98	51	Fi Main
YLP-0222	Zone 12N	439,356	6,922,547	299	120	215	45	Echo
YLP-0233	Zone 12N	371,800	6,942,176	254	153	98	45	Fi Main
YLP-0236	Zone 12N	439,693	6,922,184	289	102	241	45	Echo
YLP-0239	Zone 12N	439,659	6,922,222	290	81	241	55	Echo
YLP-0240	Zone 12N	439,634	6,922,493	281	171	240	48	Echo
YLP-0243	Zone 12N	346,173	6,933,842	172	140	121	46	BIG North
YLP-0245	Zone 12N	439,739	6,922,094	289	72	240	45	Echo
YLP-0246	Zone 12N	439,586	6,922,415	286	102	236	45	Echo
YLP-0247	Zone 12N	371,736	6,941,532	246	243	96	50	Fi Main
YLP-0248	Zone 12N	439,587	6,922,354	290	81	240	64	Echo
YLP-0251	Zone 12N	346,153	6,933,330	172	161	121	45	BIG East
YLP-0254	Zone 12N	439,729	6,922,319	283	168	240	56	Echo
YLP-0258	Zone 12N	346,209	6,933,354	170	140	121	62	BIG East
YLP-0262	Zone 12N	346,283	6,933,427	197	110	121	45	BIG East
YLP-0271	Zone 12N	346,237	6,933,396	197	152	121	63	BIG East

## **QA/QC & Core Sampling Protocols**

All drill core samples were collected under the supervision of LIFT employees and contractors. Drill core was transported from the drill platform to the core processing facility where it was logged, photographed, and split by diamond saw prior to being sampled. Samples were then bagged, and blanks and certified reference materials were inserted at regular intervals. Field duplicates consisting of quarter-cut core samples were also included in the sample runs. Groups of samples were placed in large bags, sealed with numbered tags in order to maintain a chain-of-custody, and transported from LIFT's core logging facility to ALS Labs ("ALS") laboratory in Yellowknife, Northwest Territories.

Sample preparation and analytical work for this drill program were carried out by ALS. Samples were prepared for analysis according to ALS method CRU31: individual samples were crushed to 70% passing through 2 mm (10 mesh) screen; a 1,000-gram sub-sample was riffle split (SPL-21) and then pulverized (PUL-32) such that 85% passed through 75 micron (200 mesh) screen. A 0.2-gram sub-sample of the pulverized material was then dissolved in a sodium peroxide solution and analysed for lithium according to ALS method ME-ICP82b. Another 0.2-gram sub-sample of the pulverized material was analysed for 53 elements according to ALS method ME-MS89L. All results passed the QA/QC screening at the lab, all inserted standards and blanks returned results that were within acceptable limits.

## **Qualified Person**

The disclosure in this news release of scientific and technical information regarding LIFT's mineral properties has been reviewed and approved by Ron Voordouw, Ph.D., P.Geo., Partner, Director Geoscience, Equity Exploration Consultants Ltd., and a Qualified Person as defined by National Instrument 43-101 Standards of Disclosure for Mineral Projects (NI 43-101) and member in good standing with the Northwest Territories and Nunavut Association of Professional Engineers and Geoscientists (NAPEG) (Geologist Registration number: L5245).

## **About LIFT**

LIFT is a mineral exploration company engaged in the acquisition, exploration, and development of lithium pegmatite projects located in Canada. The Company's flagship project is the Yellowknife Lithium Project located in Northwest Territories, Canada. LIFT also holds three early-stage exploration properties in Quebec, Canada with excellent potential for the discovery of buried lithium pegmatites, as well as the Cali Project in Northwest Territories within the Little Nahanni Pegmatite Group.

## **For further information, please contact:**

Francis MacDonald  
Chief Executive Officer

Daniel Gordon  
Investor Relations Manager



Tel: + 1.604.609.6185  
Email: [info@li-ft.com](mailto:info@li-ft.com)  
Website: [www.li-ft.com](http://www.li-ft.com)

Tel: +1.604.609.6185  
Email: [investors@li-ft.com](mailto:investors@li-ft.com)

### **Cautionary Statement Regarding Forward-Looking Information**

*Certain statements included in this press release constitute forward-looking information or statements (collectively, "forward-looking statements"), including those identified by the expressions "anticipate", "believe", "plan", "estimate", "expect", "intend", "may", "should" and similar expressions to the extent they relate to the Company or its management. The forward-looking statements are not historical facts but reflect current expectations regarding future results or events. This press release contains forward looking statements. These forward-looking statements and information reflect management's current beliefs and are based on assumptions made by and information currently available to the company with respect to the matter described in this new release.*

*Forward-looking statements involve risks and uncertainties, which are based on current expectations as of the date of this release and subject to known and unknown risks and uncertainties that could cause actual results to differ materially from those expressed or implied by such statements. Additional information about these assumptions and risks and uncertainties is contained under "Risk Factors" in the Company's latest annual information form filed on March 27, 2024, which is available under the Company's SEDAR+ profile at [www.sedarplus.ca](http://www.sedarplus.ca), and in other filings that the Company has made and may make with applicable securities authorities in the future. Forward-looking statements contained herein are made only as to the date of this press release and we undertake no obligation to update or revise any forward-looking statements whether as a result of new information, future events or otherwise, except as required by law. We caution investors not to place considerable reliance on the forward-looking statements contained in this press release.*

*Neither the TSX Venture Exchange nor its Regulation Services Provider (as that term is defined in the policies of the TSX Venture Exchange) accepts responsibility for the adequacy or accuracy of this news release.*