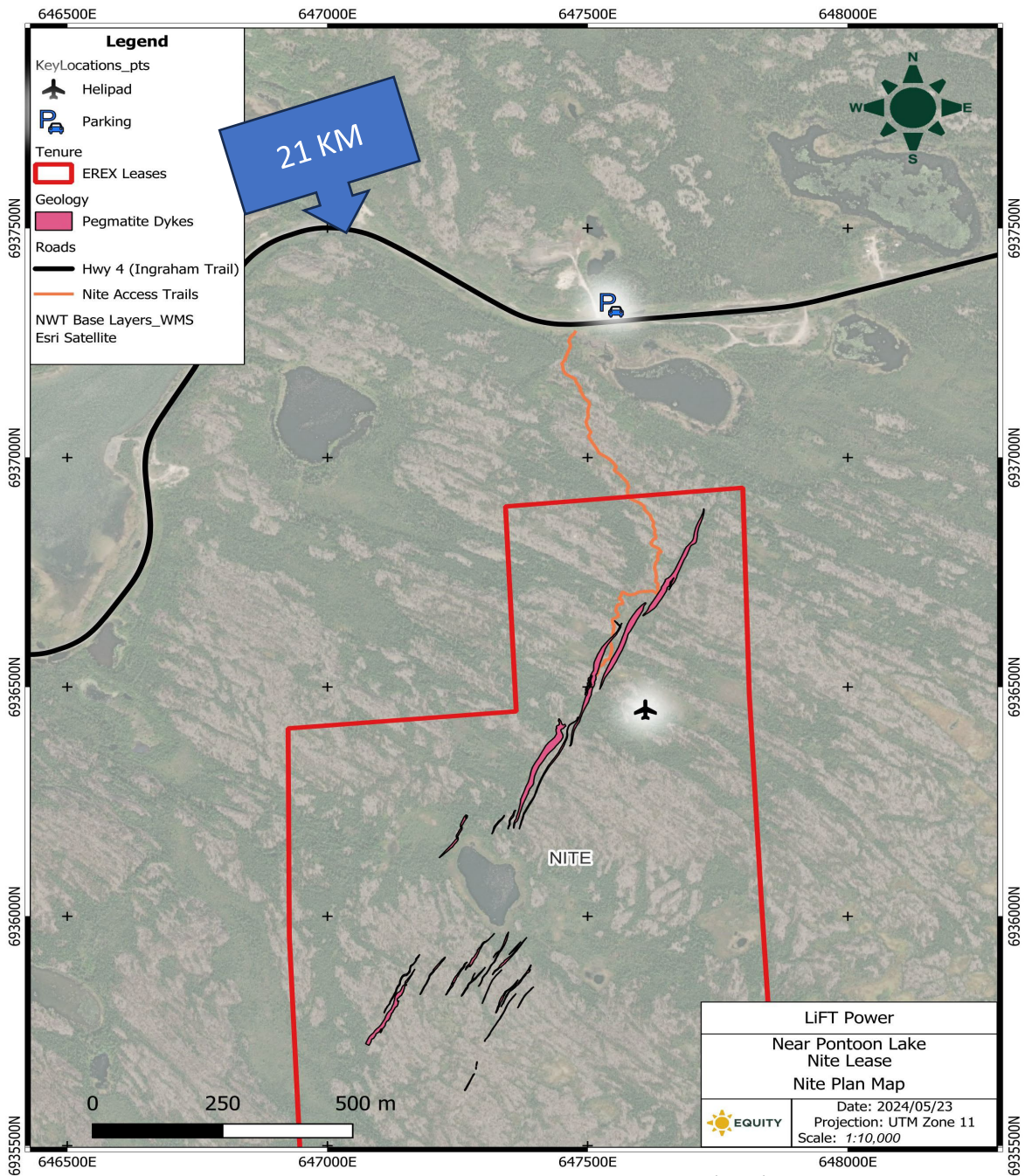


# Site Visit Information



## EMERGENCY RESPONSE

- Ambulance dispatch (road)
  - PH: 911
- Acasta Helicopters (remote)
  - PH: 1-867-873-3306
- Muster location at 21 km pullout or trail head along Ingraham Trail



## CONTACTS

- April Hayward (Li-FT) (867) 686-8375
- Madison Jerhoff (Li-FT) (403) 371-8814
- Mike Leidl (Equity Exp.) (587) 589-0390
- Claire Tincombe (DCE) (289) 200-6174
- Tyla Ahluwalia (CIRNAC) (519) 835-3044



## TOUR ETIQUETTE

- Stay within line of sight of the group at all times
- Please respect the land and minimize impacts of the tour
  - Minimize disturbance by staying on the trail
  - Pack all garbage out
- Notify guides of wildlife observations, bird nesting activities or potential archeological finds



# Nite Lease Details



## GEOLOGY



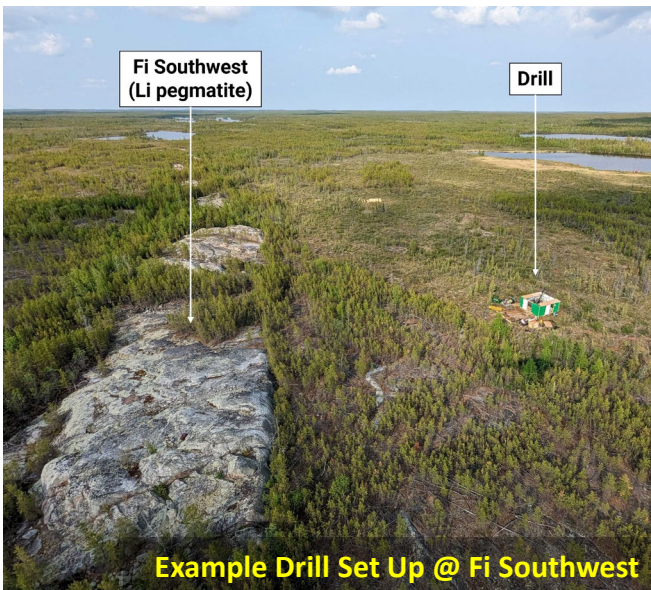
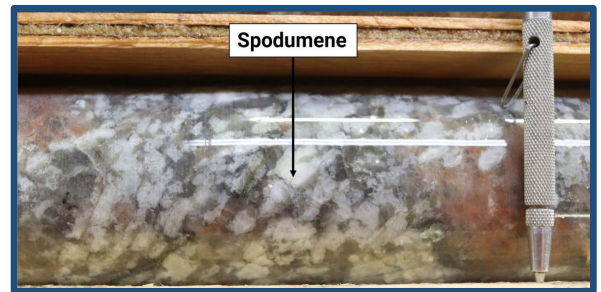
- Lithium is found in a mineral called spodumene
- Spodumene is a crystal found in pegmatite dykes
- Pegmatite dykes intrude into host rock and can be seen on the surface around Yellowknife
- Pegmatite dykes are made of inert, nontoxic material (quartz-feldspar-micas-spodumene)
- Coarse/fine spodumene concentrate is the final product that would shipped from Yellowknife if a mine were to be built in the future
  - Spodumene concentrate would be created by Dense Media Separation (like diamond mining)



**Coarse spodumene concentrate**



**spodumene crystals**



## PROJECT OVERVIEW

- **Exploration Phase**
  - Exploration camps
  - Winter roads and trails
  - Drilling
  - Aerial surveys
  - Channel sampling
  - Environmental and socioeconomic studies
- Mineral resource estimate under development
- Economic studies (e.g., PEA) to follow