



May 29, 2025

Object: Exploration in the Nemaska traplines area

The present letter is to update the Chief and Council of the Cree Nation of Nemaska about the Li-FT Power Ltd. activities for this upcoming year.

Summary

The claims were first staked by the Company in 2021 which are now divided in three distinct projects: *Rupert, Moyenne and Pontax*. Some of the claims of the Rupert Project are located on traplines R20 and R21 where we plan to conduct geophysics activities this summer.

2025 Exploration Work

Airborne Geophysics

A drone-based magnetic survey is planned to begin on or after June 30th, covering an area of approximately 9 km² around Route du Nord, between the *Whabouchi* Mine and *Poste Albanel* (Figure 2). The survey is expected to take around 7 days, weather permitting.

The total survey distance is estimated at 189 line-kilometres, acquired using 50-metre spaced survey lines and 500-metre spaced tie-lines. The survey crew will include: 1 supervisor, 1 technician and 1 drone pilot. The main base of operations will be at the Cree Construction Development Company (CCDC) camp.

Feel free to contact us for any additional information or if you have any comments regarding our work program.

"Alex Gallardo"

Alex Gallardo
Sustainable Development Manager
On behalf of Li-FT Power Ltd.
relations.rupert@kenorlandminerals.com

cc. Teddy Wapachee, Deputy Chief
cc. George Wapachee, Director General
cc. Youcef Larbi, Cree Mineral Exploration Board

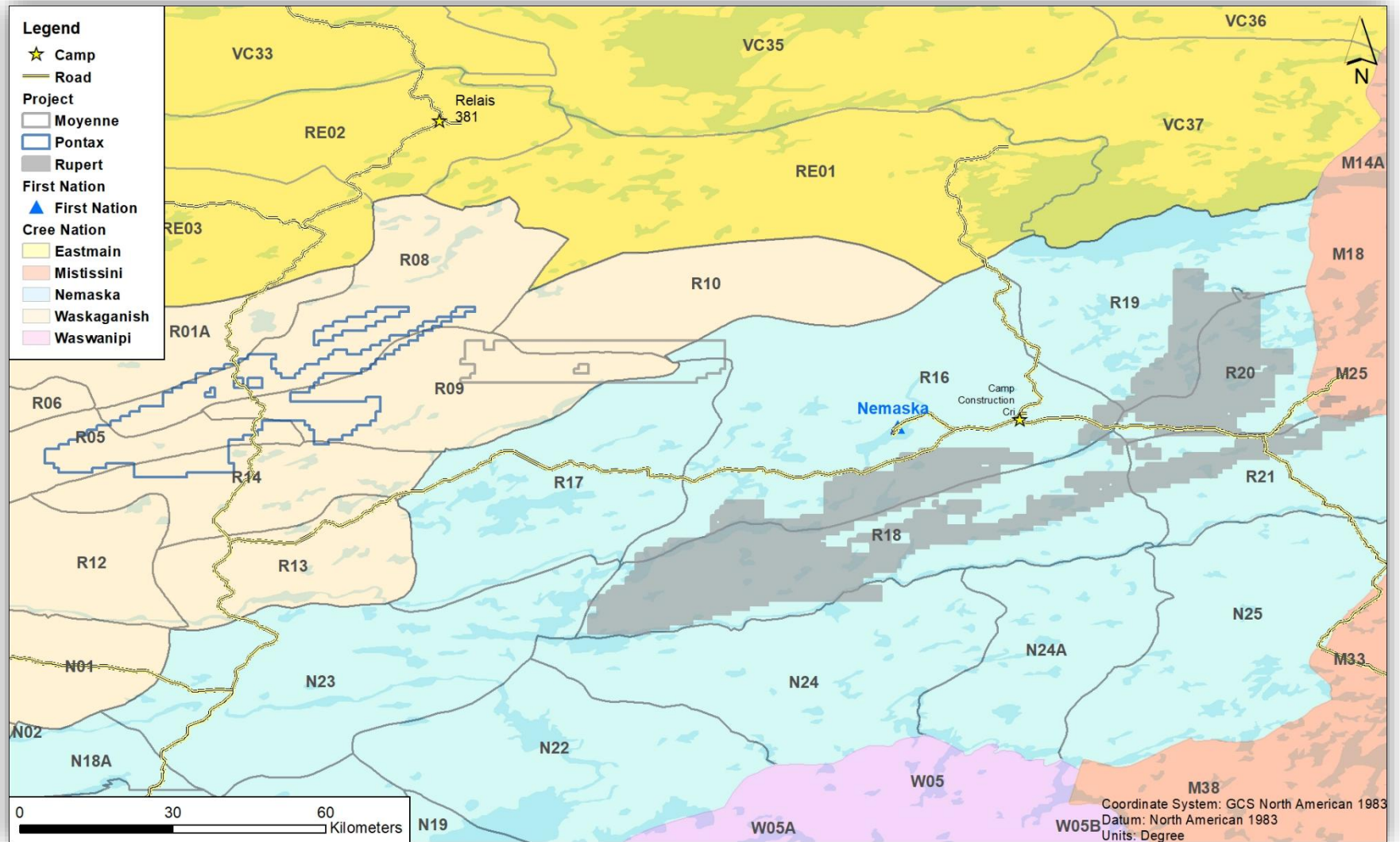


Figure 1. Pontax, Moyenne and Rupert projects over the Cree Nations

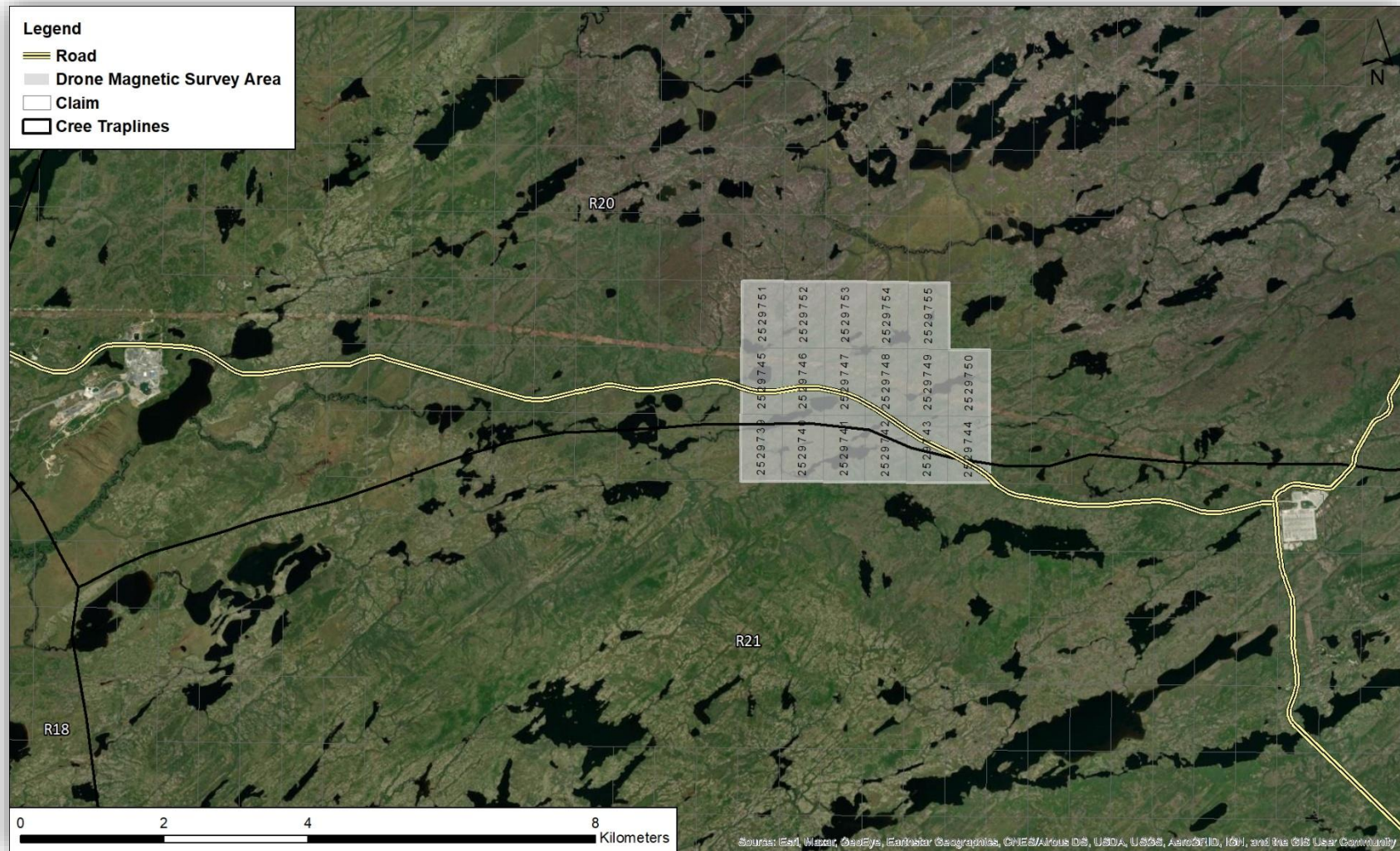


Figure 2. Airborne survey area over Nemaska Traplines.